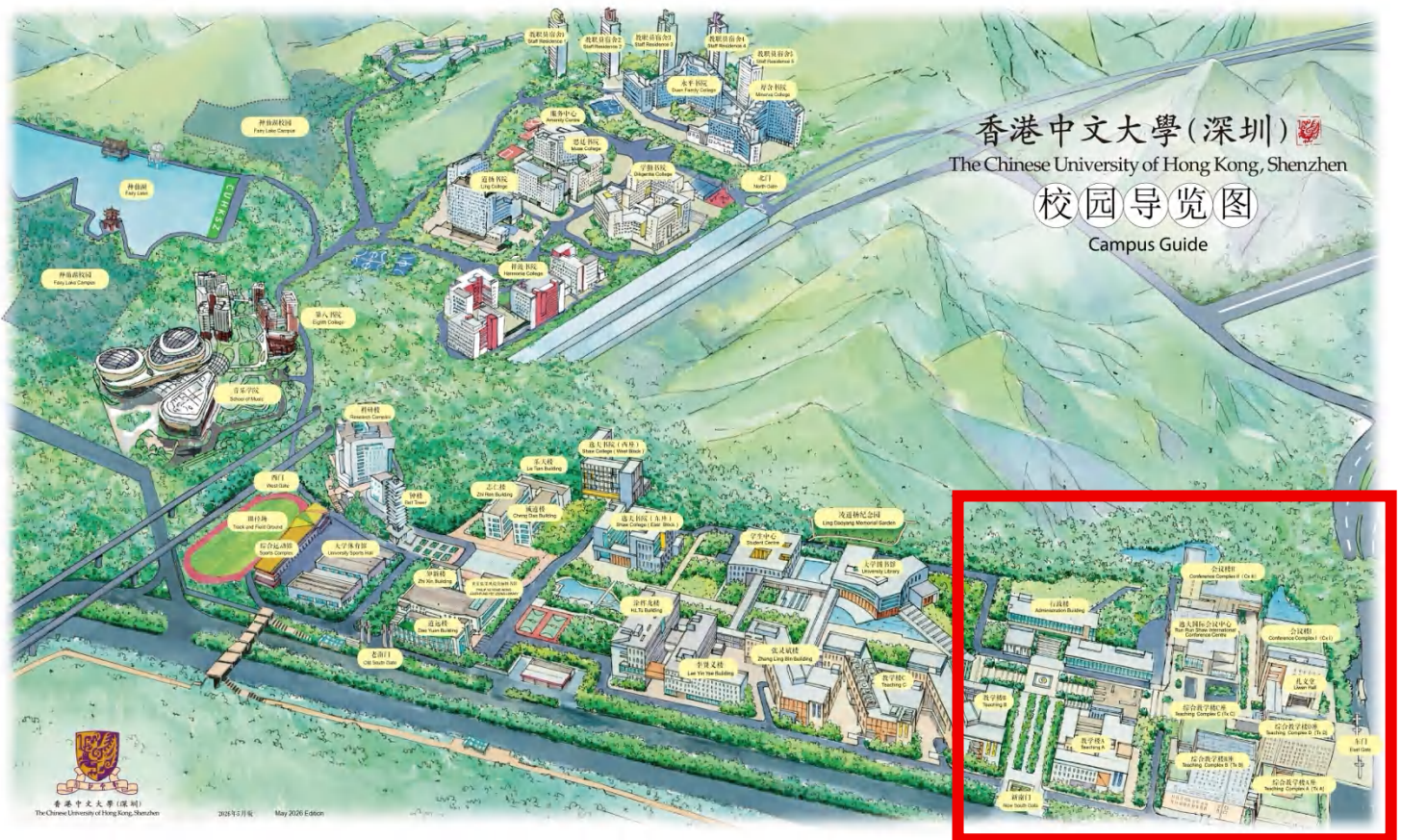


Campus Entry Guide for BIID14 Participants

Important: CUHK-Shenzhen enforces strict campus entry regulations to maintain its academic environment and ensure campus security. To enter the campus, please follow the reservation guidelines below. **Entry reservation is mandatory for all participants.**

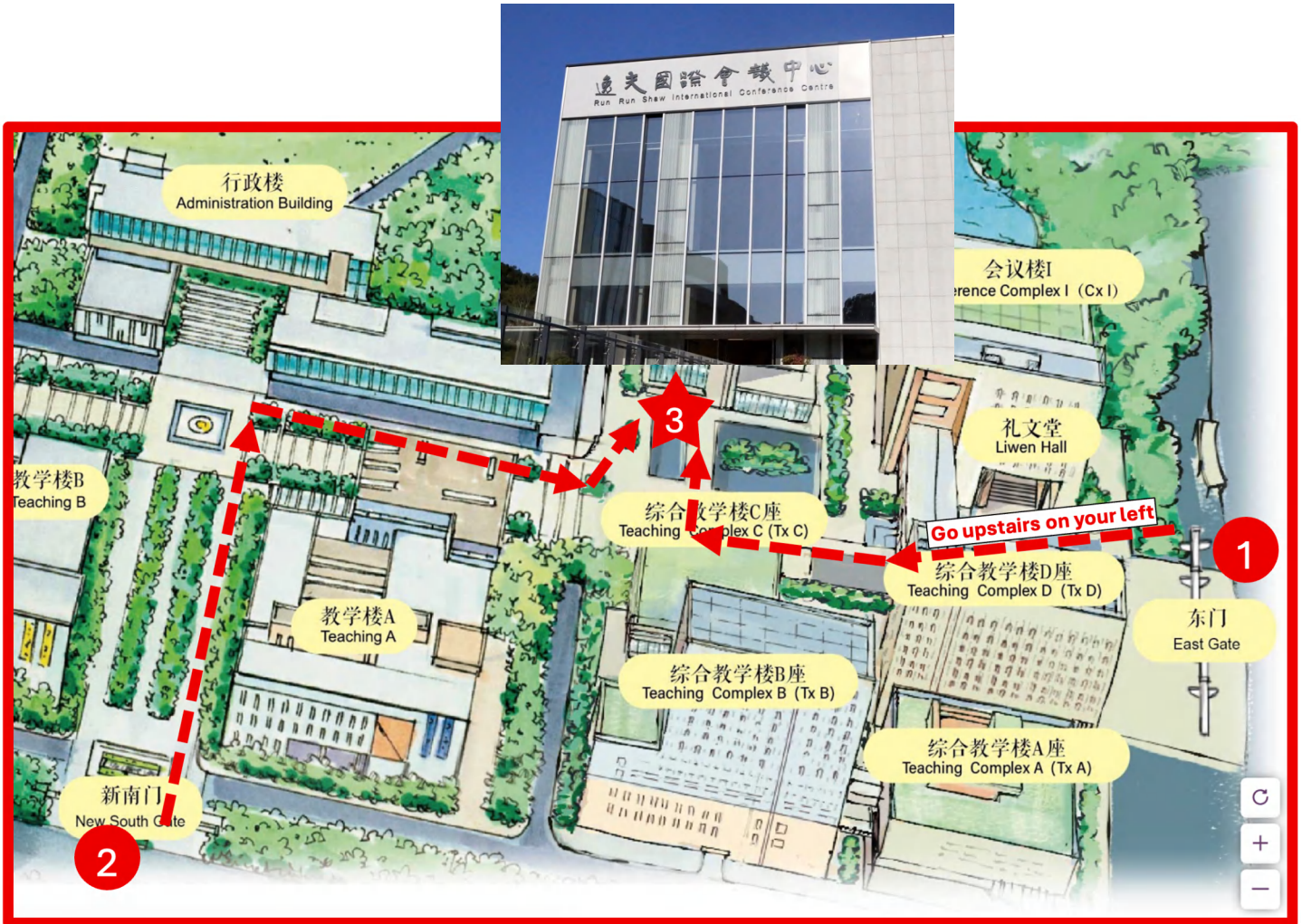
Campus Overview



The conference venue and the recommended entrance gates are located in the lower-right corner of this map.

A zoomed-in view is provided below:





Recommended entrance gates:

1. East Gate (东门)
2. New South Gate (新南门)

Conference Venue:

3. Run Run Shaw International Conference Centre (逸夫国际会议中心)

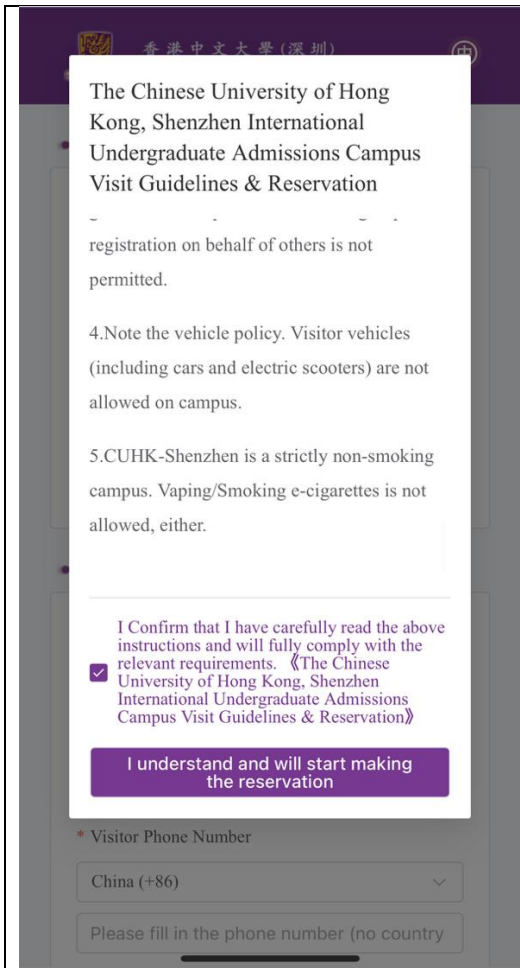
Note: If you search for “The Chinese University of Hong Kong, Shenzhen” on a map, the location may be shown near the **Old South Gate (老南门)**, which is quite far from the conference venue. **Please avoid entering campus through this gate.**

Entry Reservation

Step 1: Before your arrival (preferred) or at the entrance gates

Please open the link below to fill in the reservation form

<https://visitcampus.cuhk.edu.cn/h5/visit-campus-add?p=2AC4C9D0A22837B5B8D8CC33D0117A8587D9D367F669897A7E4564D94F738DD0&lang=en>



The Chinese University of Hong Kong, Shenzhen International Undergraduate Admissions Campus Visit Guidelines & Reservation

registration on behalf of others is not permitted.

4.Note the vehicle policy. Visitor vehicles (including cars and electric scooters) are not allowed on campus.

5.CUHK-Shenzhen is a strictly non-smoking campus. Vaping/Smoking e-cigarettes is not allowed, either.

I Confirm that I have carefully read the above instructions and will fully comply with the relevant requirements. 《The Chinese University of Hong Kong, Shenzhen International Undergraduate Admissions Campus Visit Guidelines & Reservation》

I understand and will start making the reservation

* Visitor Phone Number

China (+86)

Please fill in the phone number (no country)

Scroll down through the content, wait 5 seconds, check the consent box, then click the purple button at the bottom.



• Visitor Information

* Visitor Type

2

* Visitor Name

Please fill in the visitor's name

* Visitor Phone Number

China (+86)

Please fill in the phone number (no country

Visitor's Organization

Please enter Visitor's Organization

* ID Type

Passport

* ID Number

Please enter ID Number

* ID Image

+

Fill in your personal information as required.

For Chinese Resident, if you choose ID Type as Resident Identity Card (身份证), you will need to input your name in Chinese Characters.

For international participants, please choose ID Type as Passport, and you will need to upload your ID image.



Congratulations! Your reservation has been successfully made!

The approval results will be notified via SMS.

You can also check it at

<https://visitcampus.cuhk.edu.cn/h5/admission-tours-q>.

[View Reservation](#)

Once you submit your reservation, you will see this confirmation. Clicking the “View Reservation” can check your reservation result. The approval is automatic and instant. No need to wait the SMS.

香港中文大學(深圳)
The Chinese University of Hong Kong, Shenzhen

Reservation Result Inquiry

* Visitor Name

* Visitor Phone Number
 China (+86)

Please fill in the phone number (no country code)

Query

Only appointments made within the last 30 days are available.

Click “View Reservation” above or visit <https://visitcampus.cuhk.edu.cn/h5/admission-tours-q?lang=en>

On this page, you can input your name and phone number to query your reservation.

查询结果
visitcampus.cuhk.edu.cn

香港中文大學(深圳)
The Chinese University of Hong Kong, Shenzhen

Reservation Result Inquiry

Please Enter the Campus Within the Scheduled Time; It Will
 Expire If Overdue
 This QR Code Is Only for Campus Access Control; Show It for
 Scanning to Enter/Exit

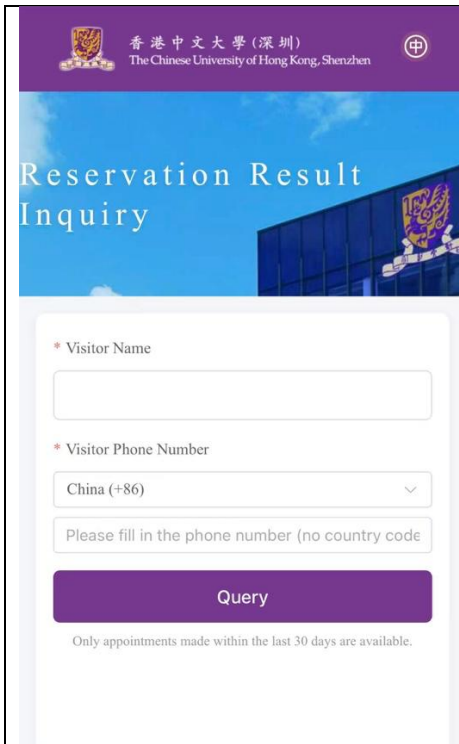
QR Code Valid Time: 00:00:12

More

After your query, you will have a QR Code. This indicates that your reservation is successful.

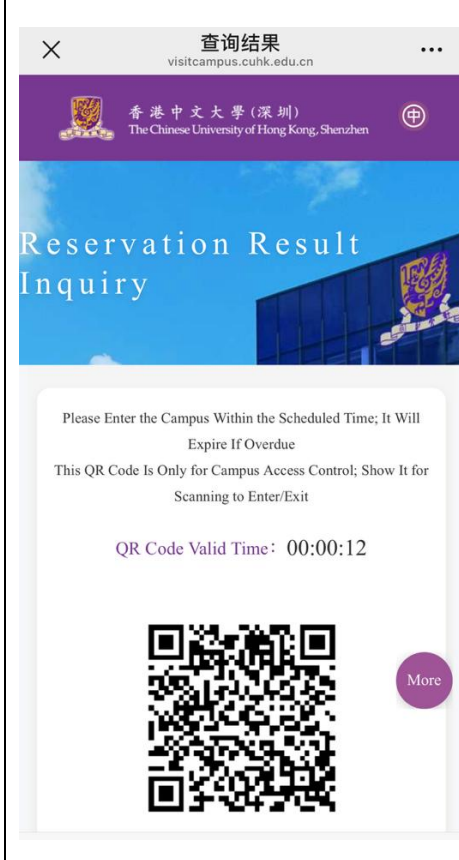
Step 2: At the entrance gates, look up your reservation and show the QR code to the security guard

Scan a reservation inquiry QR code given by the security guard, or visit <https://visitcampus.cuhk.edu.cn/h5/admission-tours-q?lang=en>



The screenshot shows the 'Reservation Result Inquiry' page on the website of The Chinese University of Hong Kong, Shenzhen. The page has a purple header with the university's name in Chinese and English, and a logo. Below the header, the title 'Reservation Result Inquiry' is displayed. The main content area contains a form with two required fields: 'Visitor Name' and 'Visitor Phone Number'. The phone number field includes a dropdown menu for country codes, currently set to 'China (+86)', and a text input field. A purple 'Query' button is positioned below the form. A note at the bottom states: 'Only appointments made within the last 30 days are available.'

On this page, you can input your name and phone number to query your reservation.



The screenshot shows the 'Reservation Result Inquiry' page on a mobile app. The title bar at the top reads '查询结果' (Query Result) and 'visitcampus.cuhk.edu.cn'. Below the header, the university's name and logo are visible. The main content area displays the title 'Reservation Result Inquiry'. Below the title, there is a warning message: 'Please Enter the Campus Within the Scheduled Time; It Will Expire If Overdue. This QR Code Is Only for Campus Access Control; Show It for Scanning to Enter/Exit'. The 'QR Code Valid Time' is shown as '00:00:12'. A large QR code is displayed at the bottom, with a 'More' button to its right.

After your query, you will have a QR Code and show it to the security guard.

Note that this QR Code is automatically refreshed every 30 seconds.

You only need to make reservation once as guided in Step 1 above. The reservation is valid for the whole conference period.

But each time you enter or exit through the entrance gates, you'll need to look up your reservation QR code and show it to the security guard.

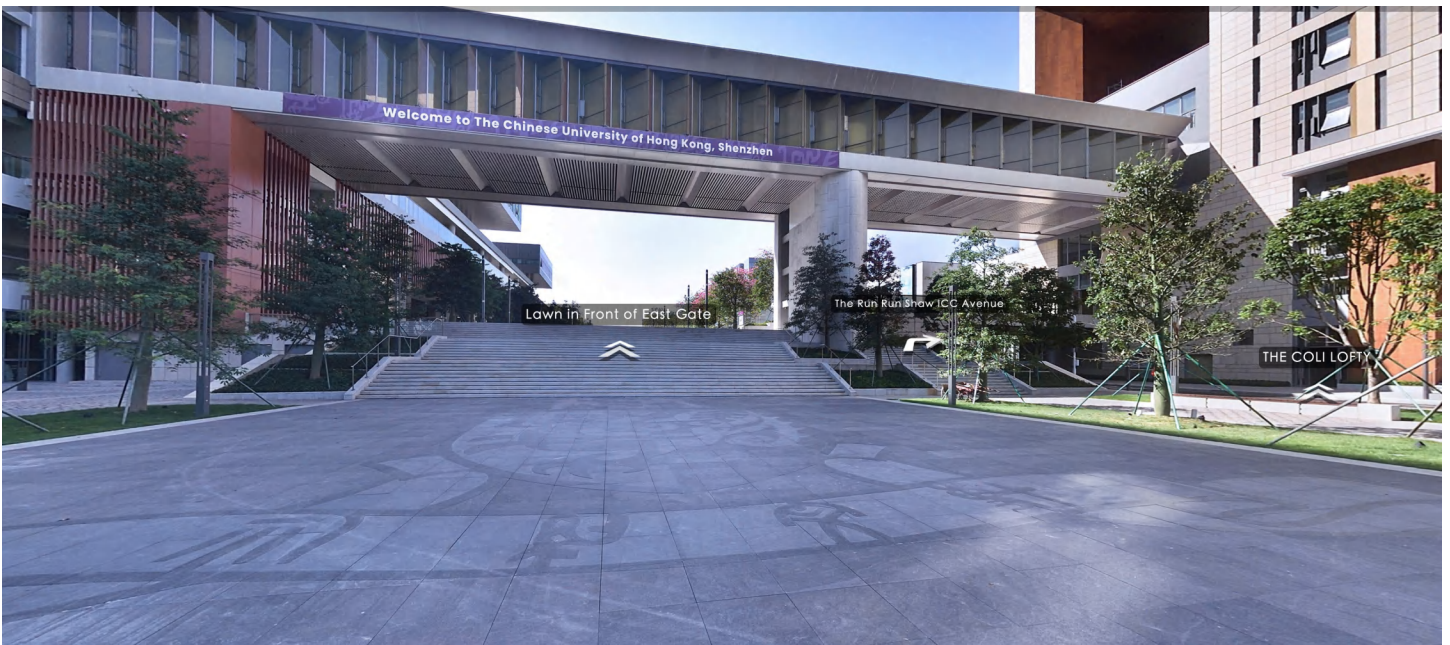
Please always bring your ID (身份证 or passport) with you and the conference badge is not valid or sufficient for campus entry.

Path from East Gate to Conference Venue

East Gate



Go upstairs



Once upstairs, you will see the conference venue on your right.



Path from New South Gate to Conference Venue

New South Gate



At this intersection, turn right.



You will have the following view.



Go straight for about 50 meters; the conference venue will be on your left.





CUHK-Shenzhen has a very nice virtual campus map that you can explore:

https://campusvr-en.cuhk.edu.cn/?scene_id=130027044



Group: BIID14 Participants



Valid until 6/27 and will update upon joining group

Important:

For timely communication, announcements, and assistance, you are highly encouraged to scan the QR code on the left using your WeChat and join the WeChat group with your real name.

The local organizers, administrative staffs, and student volunteers will be there to provide any necessary assistance.